



REVOLUTION

12/24 V. ADR



Listado de recambios

Parts list

Liste de rechanges

Ersatzteilliste

Elenco ricambi

ES Spanish

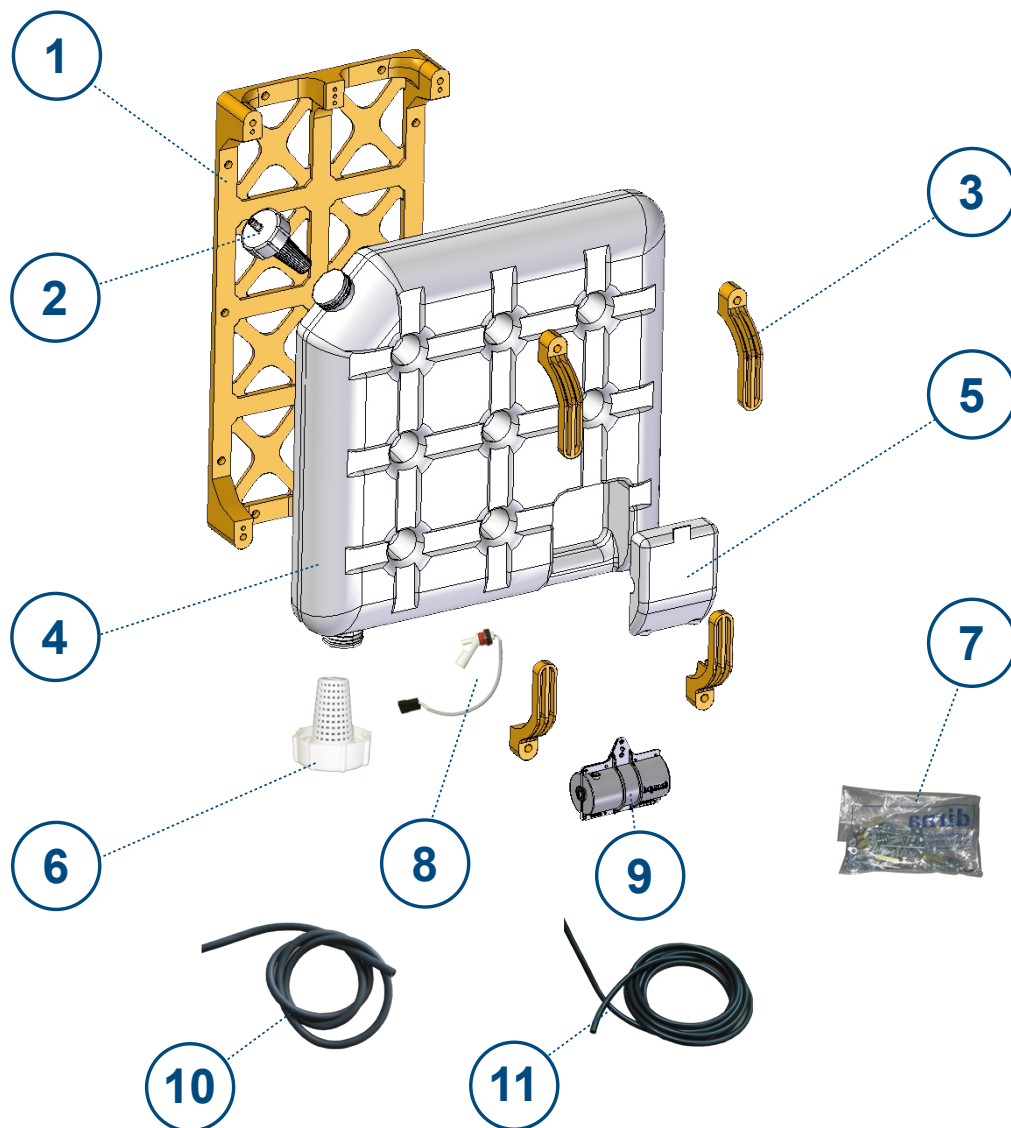
EN English

FR French

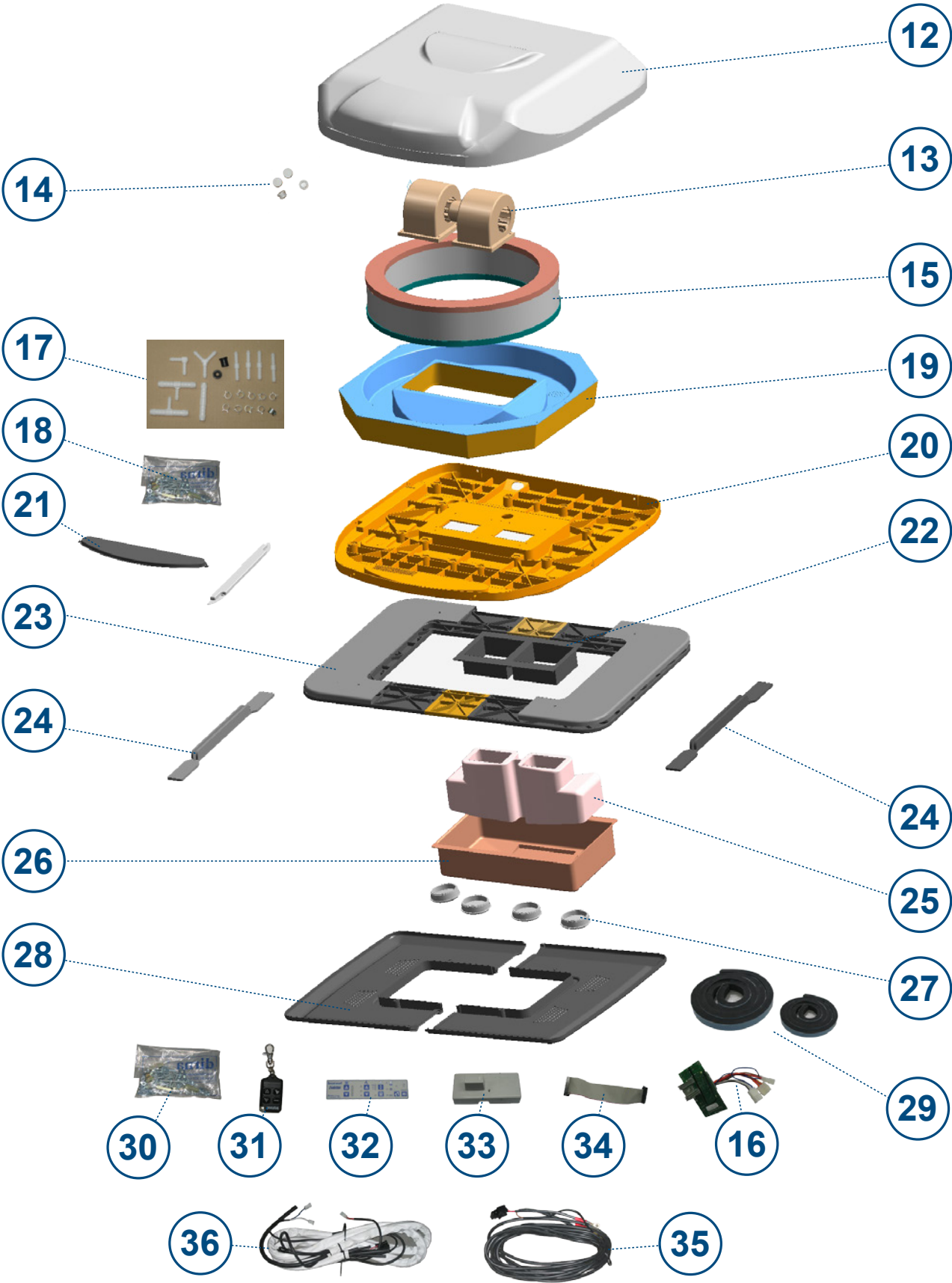
GE German

IT Italian

Listado de recambios
Parts list
Liste de rechanges
Ersatzteilliste
Elenco ricambi



Listado de recambios
Parts list
Liste de rechanges
Ersatzteilliste
Elenco ricambi



Listado de recambios

| Id. | Ctd. | Referencia | Descripción |
|-----|------|------------|---------------------------------------|
| 1 | 1 | 0910160109 | Soporte depósito |
| 2 | 1 | 091016C011 | Conjunto tapón con filtro |
| 3 | 1 | 091016C014 | Conjunto soportes fijación depósito |
| 4 | 1 | 0910160083 | Conjunto depósito |
| 5 | 1 | 0910100028 | Tapa de protección bomba |
| 6 | 1 | 0910240005 | Conjunto fungicida con caja |
| 7 | 1 | 091016C012 | Bolsa tornillería depósito |
| 8 | 1 | 0910160078 | Interruptor de nivel |
| 9 | 1 | 091016C096 | Bomba de agua 24V |
| 9a | 1 | 0910170009 | Bomba de agua 12V |
| 10 | 1 | 091016C009 | Tubo negro Ø 12 x Ø 18 |
| 11 | 1 | 091016C010 | Tubo negro Ø 10 x Ø 6 |
| 12 | 1 | 091097C003 | Conjunto tapa con serigrafía |
| 13 | 1 | 091016C006 | Presurizador 24V |
| 13a | 1 | 091016C025 | Presurizador 12V |
| 14 | 1 | 091016C028 | Tapón embellecedor |
| 15 | 1 | 091097C002 | Filtro de humedad |
| 16 | 1 | 091026C001 | Control electrónico |
| 17 | 1 | 091016C034 | Conjunto racores |
| 18 | 1 | 0910160016 | Bolsa de tornillería frente |
| 19 | 1 | 0910920010 | Conjunto depósito |
| 20 | 1 | 091097C001 | Conjunto base |
| 21 | 1 | 091016C030 | Conjunto tapas de invierno |
| 22 | 1 | 091016C035 | Canalizador base |
| 23 | 1 | 091016C033 | Conjunto placa escotilla |
| 24 | 1 | 091016C015 | Conjunto soportes de fijación |
| 25 | 1 | 091016C005 | Conjunto canalizadores frente (H 98) |
| 25a | 1 | 091016C016 | Conjunto canalizadores frente (H 135) |
| 26 | 1 | 091016C001 | Conjunto frente |
| 27 | 1 | 091016C002 | Conjunto ventanillas |
| 28 | 1 | 091016C017 | Consola (770x560) |
| 28a | 1 | 091016C018 | Consola (850x560) |
| 28b | 1 | 091016C019 | Consola (615x560) |
| 29 | 1 | 091016C024 | Conjunto juntas EPDM (H15 y H25) |
| 30 | 1 | 0910160015 | Bolsa de tornillería fijación |
| 31 | 1 | 091016C131 | Mando a distancia |
| 32 | 1 | 091016C003 | Placa de mandos |
| 33 | 1 | 091016C004 | Tapa electrónica |
| 34 | 1 | 091016C058 | Cinta con conectoras |
| 35 | 1 | 0910160074 | Cableado alimentación batería |
| 36 | 1 | 0910920041 | Conjunto cableado con tubos |

Parts list

| Id. | Qty. | Code n° | Spare Parts |
|-----|------|------------|-------------------------------------|
| 1 | 1 | 0910160109 | Tank support |
| 2 | 1 | 091016C011 | Cap with filter |
| 3 | 1 | 091016C014 | Tank fastening supports |
| 4 | 1 | 0910160083 | Tank |
| 5 | 1 | 0910100028 | Pump protection cover |
| 6 | 1 | 0910240005 | Fungicide unit with box |
| 7 | 1 | 091016C012 | Bag of tank screws |
| 8 | 1 | 0910160078 | Level circuit breaker |
| 9 | 1 | 091016C096 | Water pump 24V |
| 9a | 1 | 0910170009 | Water pump 12V |
| 10 | 1 | 091016C009 | Ø 12 x Ø 18 Black pipe |
| 11 | 1 | 091016C010 | Ø 10 x Ø 6 Black pipe |
| 12 | 1 | 091097C003 | Cover with silkscreen print |
| 13 | 1 | 091016C006 | 24V Pressuriser |
| 13a | 1 | 091016C025 | 12V Pressuriser |
| 14 | 1 | 091016C028 | Decorative cover |
| 15 | 1 | 091097C002 | Humidity filter |
| 16 | 1 | 091026C001 | Electronic control |
| 17 | 1 | 091016C034 | Adapters |
| 18 | 1 | 0910160016 | Bag of front screws |
| 19 | 1 | 0910920010 | Tank |
| 20 | 1 | 091097C001 | Base |
| 21 | 1 | 091016C030 | Winter covers |
| 22 | 1 | 091016C035 | Base channelling equipment |
| 23 | 1 | 091016C033 | Hatch plate unit |
| 24 | 1 | 091016C015 | Fastening support |
| 25 | 1 | 091016C005 | Front channelling equipment (H 98) |
| 25a | 1 | 091016C016 | Front channelling equipment (H 135) |
| 26 | 1 | 091016C001 | Front |
| 27 | 1 | 091016C002 | Windows |
| 28 | 1 | 091016C017 | Console (770x560) |
| 28a | 1 | 091016C018 | Console (850x560) |
| 28b | 1 | 091016C019 | Console (615x560) |
| 29 | 1 | 091016C024 | EPDM seals (H15 and H25) |
| 30 | 1 | 0910160015 | Bag of attachment screws |
| 31 | 1 | 091016C131 | Remote control |
| 32 | 1 | 091016C003 | Control plate |
| 33 | 1 | 091016C004 | Electronic cover |
| 34 | 1 | 091016C058 | Belt with connectors |
| 35 | 1 | 0910160074 | Battery power supply cables |
| 36 | 1 | 0910920041 | Cabled unit with pipes |

Liste de rechanges

| Id. | Qté. | Référence | Description |
|-----|------|------------|--|
| 1 | 1 | 0910160109 | Support réservoir |
| 2 | 1 | 091016C011 | Ensemble bouchon avec filtre |
| 3 | 1 | 091016C014 | Ensemble supports fixation réservoir |
| 4 | 1 | 0910160083 | Ensemble réservoir |
| 5 | 1 | 0910100028 | Couvercle de protection pompe |
| 6 | 1 | 0910240005 | Ensemble fongicide avec boîte |
| 7 | 1 | 091016C012 | Sac boulonnerie réservoir |
| 8 | 1 | 0910160078 | Interrupteur de niveau |
| 9 | 1 | 091016C096 | Pompe à eau 24V |
| 9a | 1 | 0910170009 | Pompe à eau 12V |
| 10 | 1 | 091016C009 | Tuyau noir Ø 12 x Ø 18 |
| 11 | 1 | 091016C010 | Tuyau noir Ø 10 x Ø 6 |
| 12 | 1 | 091097C003 | Ensemble couvercle avec sérigraphie |
| 13 | 1 | 091016C006 | Pressuriseur 24V |
| 13a | 1 | 091016C025 | Pressuriseur 12V |
| 14 | 1 | 091016C028 | Bouchon enjoliveur |
| 15 | 1 | 091097C002 | Filtre d'humidité |
| 16 | 1 | 091026C001 | Contrôle électronique |
| 17 | 1 | 091016C034 | Ensemble raccords |
| 18 | 1 | 0910160016 | Sac de boulonnerie partie frontale |
| 19 | 1 | 0910920010 | Ensemble réservoir |
| 20 | 1 | 091097C001 | Ensemble base |
| 21 | 1 | 091016C030 | Ensemble couvercles d'hiver |
| 22 | 1 | 091016C035 | Canalisateur base |
| 23 | 1 | 091016C033 | Ensemble plaque écoutille |
| 24 | 1 | 091016C015 | Ensemble supports de fixation |
| 25 | 1 | 091016C005 | Ensemble canalisateurs partie frontale (H 98) |
| 25a | 1 | 091016C016 | Ensemble canalisateurs partie frontale (H 135) |
| 26 | 1 | 091016C001 | Ensemble partie frontale |
| 27 | 1 | 091016C002 | Ensemble hublots |
| 28 | 1 | 091016C017 | Console (770x560) |
| 28a | 1 | 091016C018 | Console (850x560) |
| 28b | 1 | 091016C019 | Console (615x560) |
| 29 | 1 | 091016C024 | Ensemble joints EPDM (H15 et H25) |
| 30 | 1 | 0910160015 | Sac boulonnerie fixation |
| 31 | 1 | 091016C131 | Télécommande |
| 32 | 1 | 091016C003 | Plaque de commandes |
| 33 | 1 | 091016C004 | Couvercle électronique |
| 34 | 1 | 091016C058 | Bande avec connecteurs |
| 35 | 1 | 0910160074 | Câblage alimentation batterie |
| 36 | 1 | 0910920041 | Ensemble câblage avec tuyaux |

Ersatzteilliste

| Nr | Stckzahl | Art. Nr. | Beschreibung |
|-----|----------|------------|---------------------------------------|
| 1 | 1 | 0910160109 | Tankhalterung |
| 2 | 1 | 091016C011 | Deckel mit Filter |
| 3 | 1 | 091016C014 | Befestigungshalterungen Tank |
| 4 | 1 | 0910160083 | Tank |
| 5 | 1 | 0910100028 | Schutzabdeckung Pumpe |
| 6 | 1 | 0910240005 | Pilzbekämpfungsvorrichtung mit Kasten |
| 7 | 1 | 091016C012 | Beutel Schrauben für Tank |
| 8 | 1 | 0910160078 | Füllstandsschalter |
| 9 | 1 | 091016C096 | Wasserpumpe 24V |
| 9a | 1 | 0910170009 | Wasserpumpe 12V |
| 10 | 1 | 091016C009 | Rohr, schwarz Ø 12 x Ø 18 |
| 11 | 1 | 091016C010 | Rohr, schwarz Ø 10 x Ø 6 |
| 12 | 1 | 091097C003 | Abdeckung mit Beschriftung |
| 13 | 1 | 091016C006 | Druckhalter 24V |
| 13a | 1 | 091016C025 | Druckhalter 12V |
| 14 | 1 | 091016C028 | Blindstopfen |
| 15 | 1 | 091097C002 | Nassfilter |
| 16 | 1 | 091026C001 | Elektroniksteuerung |
| 17 | 1 | 091016C034 | Anschlusssteile |
| 18 | 1 | 0910160016 | Beutel Schrauben für Front |
| 19 | 1 | 0910920010 | Tank |
| 20 | 1 | 091097C001 | Grundrahmen |
| 21 | 1 | 091016C030 | Abdeckungen Winterbetrieb |
| 22 | 1 | 091016C035 | Isolierluftkanal |
| 23 | 1 | 091016C033 | Lukenplatte |
| 24 | 1 | 091016C015 | Befestigungskonsole |
| 25 | 1 | 091016C005 | Luftkanäle Front (H 98) |
| 25a | 1 | 091016C016 | Luftkanäle Front (H 135) |
| 26 | 1 | 091016C001 | Front |
| 27 | 1 | 091016C002 | Ausströmer |
| 28 | 1 | 091016C017 | Konsole (770x560) |
| 28a | 1 | 091016C018 | Konsole (850x560) |
| 28b | 1 | 091016C019 | Konsole (615x560) |
| 29 | 1 | 091016C024 | EPDM-Dichtungen (H15 und H25) |
| 30 | 1 | 0910160015 | Beutel Befestigungsschrauben |
| 31 | 1 | 091016C131 | Fernbetätigung |
| 32 | 1 | 091016C003 | Bedienpanel |
| 33 | 1 | 091016C004 | Elektronikdeckel |
| 34 | 1 | 091016C058 | Band mit Steckern |
| 35 | 1 | 0910160074 | Batterieversorgungskabel |
| 36 | 1 | 0910920041 | Leitungsbaum |

Elenco ricambi

| Id. | Qta. | Riferimento | Descrizione |
|-----|------|-------------|--|
| 1 | 1 | 0910160109 | Supporto serbatoio |
| 2 | 1 | 091016C011 | Insieme tappo con filtro |
| 3 | 1 | 091016C014 | Insieme supporti fissaggio serbatoio |
| 4 | 1 | 0910160083 | Insieme serbatoio |
| 5 | 1 | 0910100028 | Coperchio protettivo pompa |
| 6 | 1 | 0910240005 | Insieme fungicida con scatola |
| 7 | 1 | 091016C012 | Sacchetto viterie serbatoio |
| 8 | 1 | 0910160078 | Interruttore di livello |
| 9 | 1 | 091016C096 | Pompa acqua 24V |
| 9a | 1 | 0910170009 | Pompa acqua 12V |
| 10 | 1 | 091016C009 | Tubo nero Ø 12 x Ø 18 |
| 11 | 1 | 091016C010 | Tubo nero Ø 10 x Ø 6 |
| 12 | 1 | 091097C003 | Insieme coperchio con serigrafia |
| 13 | 1 | 091016C006 | Pressurizzatore 24 V |
| 13a | 1 | 091016C025 | Pressurizzatore 12 V |
| 14 | 1 | 091016C028 | Tappo decorativo |
| 15 | 1 | 091097C002 | Filtro umidità |
| 16 | 1 | 091026C001 | Controllo elettronico |
| 17 | 1 | 091016C034 | Insieme raccordi |
| 18 | 1 | 0910160016 | Sacchetto viterie frontalino |
| 19 | 1 | 0910920010 | Insieme serbatoio |
| 20 | 1 | 091097C001 | Insieme base |
| 21 | 1 | 091016C030 | Insieme coperchi per l'inverno |
| 22 | 1 | 091016C035 | Canalizzatore base |
| 23 | 1 | 091016C033 | Insieme telaio oblò |
| 24 | 1 | 091016C015 | Insieme supporti fissaggio |
| 25 | 1 | 091016C005 | Insieme canalizzatori frontalino (H 98) |
| 25a | 1 | 091016C016 | Insieme canalizzatori frontalino (H 135) |
| 26 | 1 | 091016C001 | Insieme frontalino |
| 27 | 1 | 091016C002 | Insieme finestrini |
| 28 | 1 | 091016C017 | Console (770x560) |
| 28a | 1 | 091016C018 | Console (850x560) |
| 28b | 1 | 091016C019 | Console (615x560) |
| 29 | 1 | 091016C024 | Insieme guarnizioni EPDM (H15 e H25) |
| 30 | 1 | 0910160015 | Sacchetto viterie fissaggio |
| 31 | 1 | 091016C131 | Telecomando |
| 32 | 1 | 091016C003 | Quadro comandi |
| 33 | 1 | 091016C004 | Coperchio unità elettronica |
| 34 | 1 | 091016C058 | Connettore a nastro |
| 35 | 1 | 0910160074 | Cablaggio alimentazione batteria |
| 36 | 1 | 0910920041 | Insieme cablaggio con tubi |

| | |
|-----|------------|
| Ed: | 10/10/2012 |
| Md: | 22/10/2018 |

d



Francisco Alonso, 6
28806 Alcalá de Henares, Madrid
SPAIN

| Contact | Phone | Fax | E-Mail |
|--|------------------|------------------|--|
| Sales (Ventas Internacional) | +34 91 8770510 | +34 91 8771158 | sales@dirna.bergstrominc.com |
| Comercial Nacional | +34 91 8775841 | +34 91 8836321 | ventas@dirna.bergstrominc.com |
| Orders & Deliveries (Logística internacional) | +34 91 8775846 | +34 91 8771158 | export@dirna.bergstrominc.com |
| Orders & Deliveries (Logística nacional) | +34 91 8775840 | +34 91 8836321 | comercial@dirna.bergstrominc.com |
| Technical Assistance (Internacional) | +49 511 86679681 | +49 511 86679710 | technicalassistance@dirna.bergstrominc.com |
| Technical Assistance (Nacional) | +34 91 8775845 | +34 91 883 6321 | oblanco@dirna.bergstrominc.com |

www.dirna.com

| | | |
|--|--------------------|--|
| | ATENCIÓN: | Dirna Bergstrom se reserva el derecho de efectuar modificaciones en cualquier momento de los datos contenidos en esta publicación, por razones técnicas o comerciales. |
| | NOTE: | <i>For technical and commercial reasons, Dirna Bergstrom reserves the right to change the data contained in this brochure.</i> |
| | ATTENTION: | Dirna Bergstrom se réserve le droit d'effectuer à tout moment des modifications des données reprises sur cette publication, pour des raisons techniques ou commerciales. |
| | HUWEIS: | <i>Dirna Bergstrom behält sich vor, aus technischen oder kaufmännischen Gründen jederzeit Änderungen der Angaben dieser Veröffentlichung vorzunehmen.</i> |
| | ATTENZIONE: | Dirna Bergstrom si riserva il diritto di effettuare modifiche in qualsiasi momento ai dati contenuti in questa pubblicazione, per motivi tecnici o commerciali. |